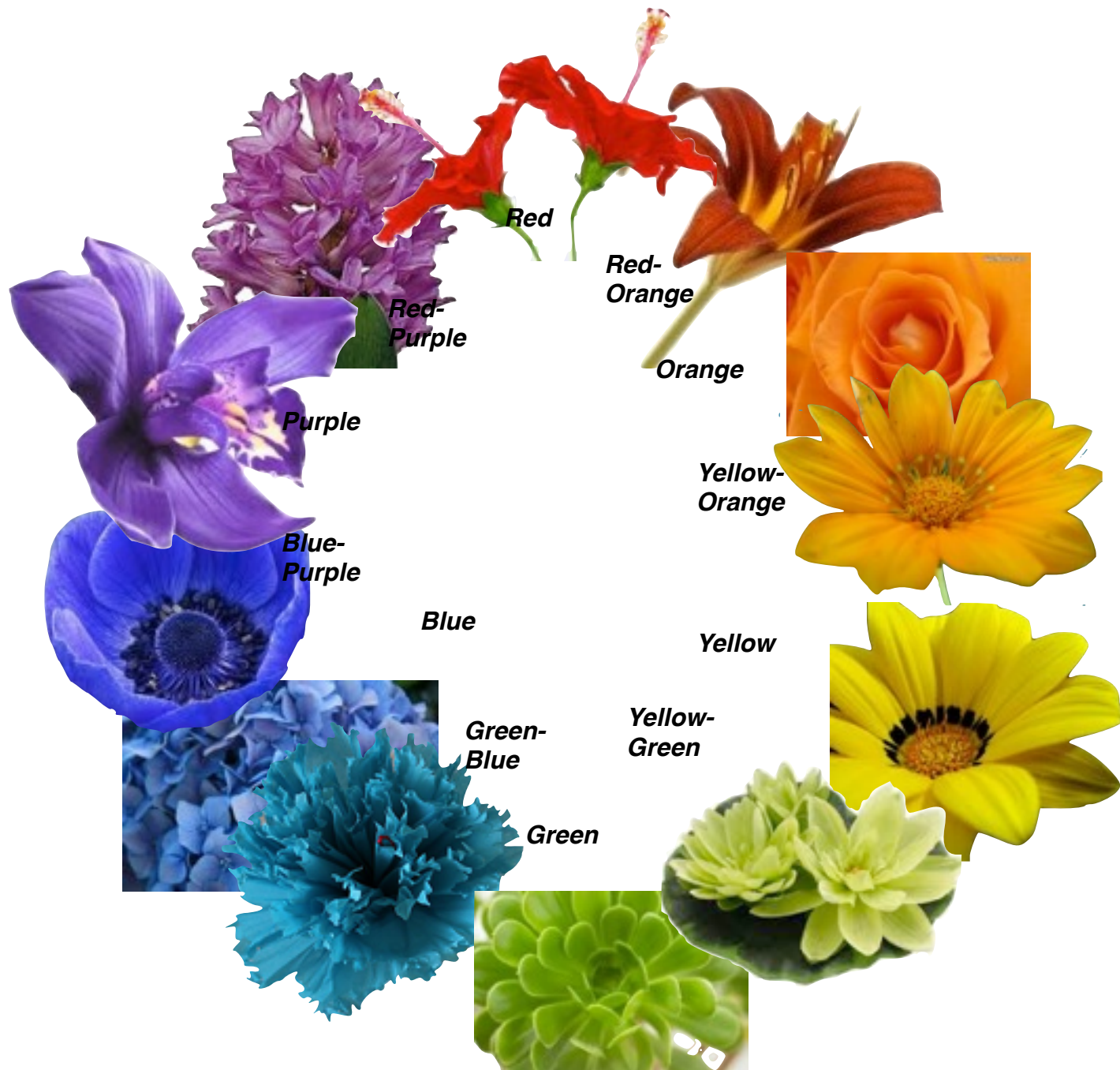
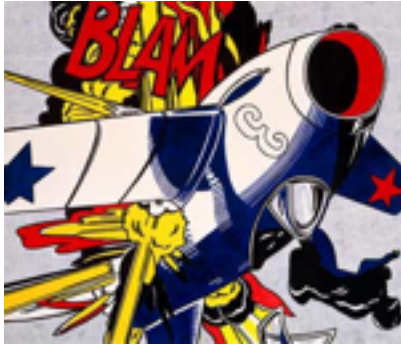


Color Wheel
Mrs. Blackmon
Theme:
Flowers





Primary Colors:
(Red, blue, and yellow)
Can not be made by
mixing other colors
together



Secondary Colors:
(Green, violet, and orange)
Made by mixing two
primaries



**Tertiary/
Intermediate :**
made by mixing
a primary and
secondary color
together



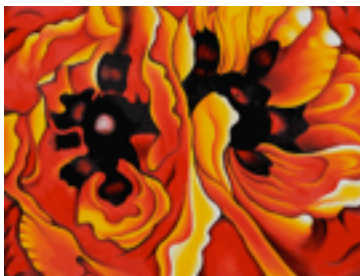
Monochromatic:
One color and it's
tints and shades



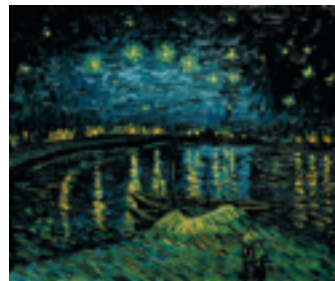
Complementary:
Colors opposite
of each other on the
color wheel



**Split
Complement:**
Complementary
colors using
the two colors
on either side
of one of the
complements



Warm:
Red, yellow,
and orange



Cool:
Blue, green,
and purple



Analogous:
Colors side by
side on the color
wheel that share
a common color
base